

Stanford Medicine Children's Health Referral Directory



We are pleased to present the *Stanford Medicine Children's Health Referral Directory*, designed to provide the latest information about our physicians, office locations, clinical services, and programs available for you and your patients.



Physician Relations Services
PhysicianRelations@stanfordchildrens.org
(650) 724-9606

As a referring provider, you are a critical part of the care team. We look forward to connecting with you. Please use one of the resources below for more information, based on the nature of your inquiry.

Outpatient Specialty Referrals

Submit directly to our MDPortal at mdportal.stanfordchildrens.org

If you are unable to submit directly to MDPortal, please fax to (650) 721-2884

For Urgent Referral Triage

Call our MD-to-MD Consult Line: (800) 995-5724

Referral forms can be found at:

<https://www.stanfordchildrens.org/en/refer/forms>



Alphabetical Listing of Referral Numbers

SBP | South Bay / Peninsula **SFNB** | San Francisco / North Bay **EB** | East Bay **CC** | Central Coast **CV** | Central Valley

| | PHONE | FAX |
|------------------------------------|----------------|----------------|
| Adolescent Medicine | | |
| SBP | (800) 995-5724 | (650) 721-2884 |
| Allergy / Immunology | | |
| SBP | (800) 995-5724 | (650) 721-2884 |
| SFNB | (844) 733-2762 | (650) 725-7578 |
| Audiology | | |
| SBP | (800) 995-5724 | (650) 721-2884 |
| Biofeedback | | |
| SFNB | (844) 733-2762 | (650) 725-7578 |
| Cardiology | | |
| <i>Palo Alto</i> | (800) 995-5724 | (650) 721-2884 |
| <i>South Bay / Los Gatos</i> | (408) 448-2817 | (408) 448-4807 |
| SFNB | (844) 733-2762 | (650) 725-7578 |
| EB | (925) 295-1701 | (925) 295-1704 |
| CC | (831) 757-7722 | (831) 757-7733 |
| Complex Primary Care Clinic | | |
| SBP | (800) 995-5724 | (650) 721-2884 |
| Dermatology | | |
| SBP | (800) 995-5724 | (650) 721-2884 |
| EB | (925) 263-5794 | (925) 263-5795 |
| Development and Behavior | | |
| SBP | (800) 995-5724 | (650) 721-2884 |
| CC | (800) 995-5724 | (650) 721-2884 |
| EB | (925) 263-5794 | (925) 263-5795 |
| Eating Disorders | | |
| SBP | (650) 723-5511 | (650) 497-4246 |

| | PHONE | FAX |
|---|----------------|----------------|
| Endocrinology / Diabetes | | |
| SBP | (800) 995-5724 | (650) 721-2884 |
| CC | (800) 995-5724 | (650) 721-2884 |
| SFNB | (844) 733-2762 | (650) 725-7578 |
| EB | (925) 263-5794 | (925) 263-5795 |
| Gastroenterology, Hepatology and Nutrition | | |
| <i>South Bay / Palo Alto / Capitola</i> | (800) 995-5724 | (650) 721-2884 |
| <i>Specialty Services - Los Gatos</i> | (800) 995-5724 | (650) 721-2884 |
| <i>Pediatric Gastroenterology - Los Gatos</i> | (408) 358-3573 | (408) 356-2888 |
| SFNB | (844) 733-2762 | (650) 725-7578 |
| EB | (925) 263-5794 | (925) 263-5795 |
| <i>Monterey</i> | (831) 375-1000 | (831) 655-1548 |
| General Surgery | | |
| SBP | (800) 995-5724 | (650) 721-2884 |
| SFNB | (844) 733-2762 | (650) 725-7578 |
| EB | (925) 263-5794 | (925) 263-5795 |
| Genetics | | |
| SBP | (800) 995-5724 | (650) 721-2884 |
| SFNB | (844) 733-2762 | (650) 725-7578 |
| EB | (925) 263-5794 | (925) 263-5795 |
| Gynecology | | |
| SBP | (800) 995-5724 | (650) 721-2884 |
| Hand | | |
| SBP | (844) 416-7846 | (650) 721-2884 |
| EB | (844) 416-7846 | (925) 263-5795 |
| Heart Transplant | | |
| SBP | (800) 995-5724 | (650) 721-2884 |

Alphabetical Listing of Referral Numbers

SBP | South Bay/Peninsula **SFNB** | San Francisco/North Bay **EB** | East Bay **CC** | Central Coast **CV** | Central Valley

| | PHONE | FAX |
|--|----------------|----------------|
| Hematology | | |
| SBP | (800) 995-5724 | (650) 721-2884 |
| CC | (800) 995-5724 | (650) 721-2884 |
| SFNB | (844) 733-2762 | (650) 725-7578 |
| EB | (925) 941-4144 | (925) 947-3208 |
| Immune Behavioral Health (PANS) | | |
| SBP | (800) 995-5724 | (650) 721-2884 |
| Infectious Disease | | |
| SBP | (800) 995-5724 | (650) 721-2884 |
| SFNB | (844) 733-2762 | (650) 725-7578 |
| EB | (925) 263-5794 | (925) 263-5795 |
| Intestinal Transplant | | |
| SBP | (650) 725-8771 | (650) 736-7857 |
| Kidney Transplant | | |
| SBP | (650) 724-8236 | (650) 723-4312 |
| Liver Transplant | | |
| SBP | (650) 725-8771 | (650) 736-7857 |
| Lung and Heart-Lung Transplant | | |
| SBP | (650) 498-2568 | (650) 723-4312 |
| Motion and Sports Performance Lab | | |
| SBP | (408) 426-8124 | (650) 721-2884 |
| Nephrology | | |
| SBP | (800) 995-5724 | (650) 721-2884 |
| SFNB | (844) 733-2762 | (650) 725-7578 |
| EB | (925) 263-5794 | (925) 263-5795 |
| Neurology | | |
| SBP | (800) 995-5724 | (650) 721-2884 |
| CC | (800) 995-5724 | (650) 721-2884 |
| SFNB | (844) 733-2762 | (650) 725-7578 |
| EB | (925) 263-5794 | (925) 263-5795 |

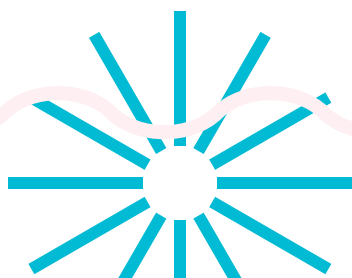
| | PHONE | FAX |
|-------------------------------|----------------|----------------|
| Neuro-Oncology | | |
| SBP | (800) 995-5724 | (650) 721-2884 |
| Neurosurgery | | |
| SBP | (800) 995-5724 | (650) 721-2884 |
| SFNB | (844) 733-2762 | (650) 725-7578 |
| EB | (925) 263-5794 | (925) 263-5795 |
| Nutrition | | |
| SBP | (800) 995-5724 | (650) 721-2884 |
| Obstetrics | | |
| <i>Welch Road, Palo Alto</i> | | |
| | (800) 995-5724 | (650) 725-2062 |
| <i>Quarry Road, Palo Alto</i> | | |
| | (650) 721-6060 | (650) 366-6070 |
| <i>Mountain View</i> | | |
| | (650) 988-7470 | (650) 725-7253 |
| <i>Redwood City</i> | | |
| | (650) 366-5594 | (650) 366-6352 |
| Oncology | | |
| SBP | (800) 995-5724 | (650) 721-1086 |
| SFNB | (844) 733-2762 | (650) 725-7578 |
| EB | (925) 941-4144 | (925) 947-3208 |
| Ophthalmology | | |
| SBP | (800) 995-5724 | (650) 721-2884 |
| Orthopedics | | |
| SBP | (844) 416-7846 | (650) 721-2884 |
| SFNB | (844) 416-7846 | (650) 725-7578 |
| EB | (844) 416-7846 | (925) 263-5795 |
| Otolaryngology (ENT) | | |
| SBP | (800) 995-5724 | (650) 721-2884 |
| EB | (925) 263-5794 | (925) 263-5795 |

Alphabetical Listing of Referral Numbers

SBP | South Bay/Peninsula **SFNB** | San Francisco/North Bay **EB** | East Bay **CC** | Central Coast **CV** | Central Valley

| | PHONE | FAX |
|-------------------------------------|----------------|----------------|
| Pain Management | | |
| SBP | (800) 995-5724 | (650) 721-2884 |
| EB | (800) 995-5724 | (650) 721-2884 |
| Perinatal Diagnostics Center | | |
| <i>Fremont</i> | (800) 995-5724 | (510) 713-9997 |
| <i>Modesto</i> | (800) 995-5724 | (209) 672-6378 |
| <i>Mountain View</i> | (650) 988-7930 | (650) 988-7859 |
| <i>Palo Alto</i> | (800) 995-5724 | (650) 725-9877 |
| <i>Redwood City</i> | (800) 995-5724 | (650) 381-3488 |
| <i>Salinas</i> | (800) 995-5724 | (831) 440-3432 |
| <i>Santa Cruz</i> | (800) 995-5724 | (831) 464-9996 |
| Plastic Surgery | | |
| SBP | (800) 995-5724 | (650) 721-2884 |
| SFNB | (844) 733-2762 | (650) 725-7578 |
| Psychiatry | | |
| SBP | (650) 723-5511 | (650) 724-7389 |
| Pulmonary | | |
| SBP | (844) 724-4140 | (650) 721-2884 |
| CC | (844) 724-4140 | (650) 721-2884 |
| SFNB | (844) 724-4140 | (650) 725-7578 |
| EB | (844) 724-4140 | (925) 263-5795 |

| | PHONE | FAX |
|----------------------------------|----------------|----------------|
| Rehabilitation Services | | |
| Occupational Therapy | | |
| SBP | (800) 995-5724 | (650) 721-2884 |
| Rehabilitation Services | | |
| Physical Therapy | | |
| SBP | (650) 736-2000 | (650) 721-2884 |
| EB | (888) 897-3422 | (650) 736-3406 |
| Rehabilitation Services | | |
| Speech-Language Pathology | | |
| SBP | (650) 736-2000 | (650) 721-2884 |
| Rheumatology | | |
| SBP | (800) 995-5724 | (650) 721-2884 |
| SFNB | (844) 733-2762 | (650) 725-7578 |
| CC | (800) 995-5724 | (650) 721-2884 |
| EB | (925) 263-5794 | (925) 263-5795 |
| Sleep Center | | |
| SBP | (800) 995-5724 | (650) 721-2884 |
| Urology | | |
| SBP | (800) 995-5724 | (650) 721-2884 |
| CC | (800) 995-5724 | (650) 721-2884 |
| SFNB | (844) 733-2762 | (650) 725-7578 |
| EB | (925) 263-5794 | (925) 263-5795 |
| Weight Clinic | | |
| SBP | (800) 995-5724 | (650) 721-2882 |



Network Locations

SBP | South Bay/Peninsula **SFNB** | San Francisco/North Bay **EB** | East Bay **CC** | Central Coast **CV** | Central Valley

Brentwood | **EB**

Stanford Medicine Children's Health
Specialty Services – Brentwood
2400 Balfour Road, Suite 230
Brentwood, CA 94513

Burlingame | **SBP**

Stanford Medicine Children's Health
Specialty Services – Burlingame
1720 El Camino Real
Burlingame, CA 94010

Capitola | **CC**

Stanford Medicine Children's Health
Specialty Services – Capitola
824 Bay Ave., Suite 70
Capitola, CA 95010

Emeryville | **EB**

Stanford Medicine Children's Health
Specialty Services – Emeryville
6121 Hollis St., Suite 2
Emeryville, CA 94608

Fremont | **EB**

Stanford Medicine Children's Health
Specialty Services – Fremont
2299 Mowry Ave., Suite 2A
Fremont, CA 94538

Livermore | **EB**

Stanford Medicine Children's Health
Specialty Services – Livermore
1134 Murrieta Blvd.
Livermore, CA 94550

Los Gatos | **SBP**

Audiology – Los Gatos
14651 S. Bascom Ave., Suite 112
Los Gatos, CA 95032

Stanford Medicine Children's Health –
Pediatric Cardiology
14651 S Bascom Ave., Suite 112
Los Gatos, CA 95032

Rehabilitation Services – Los Gatos
555 Knowles Drive, Suite 207
Los Gatos, CA 95032

Stanford Medicine Children's Health
Specialty Services – Los Gatos
14601 S Bascom Ave., Suite 200
Los Gatos, CA 95032

Stanford Medicine Children's Health –
Pediatric Gastroenterology
14651 S. Bascom, Suite 110
Los Gatos, CA 95032

Menlo Park | **SBP**

Stanford Medicine Children's Health
Specialty Services – Menlo Park
321 Middlefield Road
Menlo Park, CA 94025

Monterey | **CC**

Stanford Medicine Children's Health
Specialty Services – Monterey
1900 Garden Road, Suite 130
Monterey, CA 93940

Mountain View | **SBP**

Stanford Medicine Children's Health
Specialty Services – Mountain View /
Castro Commons
1174 Castro St., Suite 250
Mountain View, CA 94040

Stanford Medicine Children's Health
Specialty Services – Mountain View
2495 Hospital Drive, Suite 625
Mountain View, CA 94040

Novato | **SFNB**

Stanford Medicine Children's Health
Specialty Services – Novato
101 Rowland Way, Suite 220
Novato, CA 94945

Palo Alto | **SBP**

Child and Adolescent Mental Health
401 Quarry Road
Palo Alto, CA 94305

Children's Services – Watson Court
2452 Watson Ct.
Palo Alto, CA 94303

Mary L. Johnson Specialty Services
730 Welch Road
Palo Alto, CA 94304

Outpatient MRI Center
732 Welch Road
Palo Alto, CA 94304

Stanford Medicine Children's Health
Specialty Services – Welch Road
770 Welch Road
Palo Alto, CA 94304

Pleasant Hill | **EB**

Stanford Medicine Children's Health
Orthopedics and Sports Medicine –
Pleasant Hill
3480 Buskirk Ave., Suite 125
Pleasant Hill, CA 94523

Diablo Valley Child Neurology
400 Taylor Blvd., Suite 306
Pleasant Hill, CA 94523

Network Locations

SBP | South Bay/Peninsula **SFNB** | San Francisco/North Bay **EB** | East Bay **CC** | Central Coast **CV** | Central Valley

Pleasanton | **EB**

Stanford Medicine Children's Health
Orthopedics and Sports
Medicine – Pleasanton
5000 Pleasanton Ave., Suite 200
Pleasanton, CA 94566

San Francisco | **SFNB**

Stanford Medicine Children's Health
Specialty Services – San Francisco
1100 Van Ness Ave., 7th Floor
San Francisco, CA 94109

Sunnyvale | **SBP**

Stanford Medicine Children's Health
Specialty Services – Sunnyvale
1195 W. Fremont Ave.
Sunnyvale, CA 94087

Salinas | **CC**

Stanford Medicine Children's Health –
Pediatric Cardiology
258 San Jose St., Suite A
Salinas, CA 93901

Walnut Creek | **EB**

Stanford Medicine Children's Health
Specialty Services – Walnut Creek
106 La Casa Via
Walnut Creek, CA 94598

Perinatal Diagnostic Centers

Fremont | **EB**

Perinatal Diagnostic Center – Fremont
2147 Mowry Ave.
Fremont, CA 94538

Modesto | **CV**

Perinatal Diagnostic Center – Modesto
200 E. Granger Ave.
Modesto, CA 95350

Mountain View | **SBP**

Perinatal Diagnostic Center –
Mountain View
2495 Hospital Drive, Suite 500
Mountain View, CA 94040

Palo Alto | **SBP**

Perinatal Diagnostic Center – Palo Alto
725 Welch Road, 3rd Floor
Palo Alto, CA 94304

Redwood City | **SBP**

Perinatal Diagnostic Center –
Redwood City
2900 Whipple Ave.
Redwood City, CA 94062

Salinas | **CC**

Perinatal Diagnostic Center – Salinas
212 San Jose St.
Salinas, CA 93901

Santa Cruz | **CC**

Perinatal Diagnostic Center –
Santa Cruz
1685 Commercial Way, Suite A
Santa Cruz, CA 95065

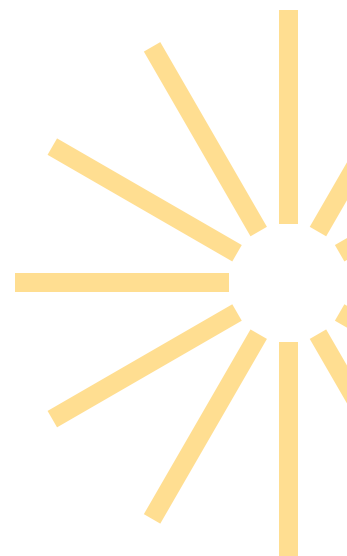
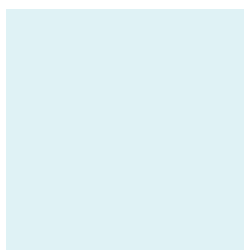
Women's Care and Obstetric Locations

Palo Alto | **SBP**

Women's Health – Palo Alto
211 Quarry Road, Suite 107
Palo Alto, CA 94304

Redwood City | **SBP**

Women's Care Medical Group
2900 Whipple Ave., Suite 135
Redwood City, CA 94062



MD Portal

What is the Stanford Medicine Children's Health MD Portal? The MD Portal gives community physicians online, password protected access to the same electronic medical record that Stanford Medicine Children's Health provider and medical staff use.

Who can get an account? Providers and support staff.

What can you do in the portal? Providers and support staff can submit and track the status of referrals.

With the MD Portal you can:



Get access to the full patient chart.



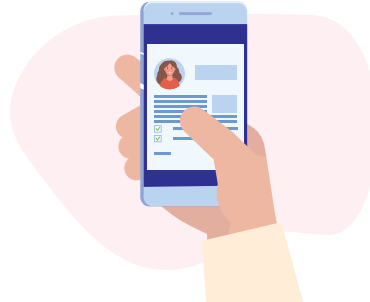
Make and track status of ambulatory referrals.



View radiology procedures (imaging).



Securely communicate with the care team.



View patient updates in real-time.

To sign up for the MD Portal, visit: mdportal.stanfordchildrens.org
Click on **Request New Account** to sign up.

